

AIRLINK™ PINPOINT XT MOBILE TRACKING DEVICE FOR GPRS NETWORKS

KEY FEATURES

- **Markets**
 - Fleet Management
 - Automatic Vehicle Location (AVL)
 - Field Service
 - Mobile Resource Management (MRM)
- **Product Features**
 - Embedded Intelligence
 - I/O Ports
 - Low Power Mode
 - Compact Design
- **Product Benefits**
 - Persistent Network Connectivity
 - Rugged for Extreme Environments
 - Extensive Vehicle Telemetry
 - Remote Management and Configuration
 - Small Form Factor for Installation Flexibility

TECHNICAL SPECIFICATIONS

- **Technology**
 - GPRS (MS-12)
- **Bands**
 - Quad Band GPRS
 - 850/1900 and 900/1800 MHz
- **Environmental**
 - Operating Temperature:
 - 30° to 70° Celsius
 - Storage Temperature:
 - 40° to 85° Celsius
- **Power Consumption:
(@12V DC)**
 - Transmit/Receive (Typical/Max): 250/300 mA
 - Idle: 163 mA
 - Low Power Mode: 124 mA
 - Input Voltage: 9 - 28V DC

- **Standards/Approvals**
 - FCC
 - Industry Canada
 - Carrier specific approvals
 - RoHS compliant
 - PTCRB
 - CE
- **Host Interfaces**
 - USB 2.0 (Mini-B5)
 - I/O: 4 digital inputs, 3 analog inputs, 2 relay outputs
 - Antenna Connection:
 - RF - 50 Ohm SMA
 - GPS - 50 Ohm SMA
 - RS-232: with adapter cable (300 - 115200 baud)
- **Dimensions**
 - 76 mm x 27 mm x 121 mm
 - 317 grams

- **Application Interfaces**
 - TCP/IP, UDP/IP, DHCP, HTTP, SNMP, SMTP, SMS, MSCI, NMEA, TAIP, GPS Binary
- **LED Indicators**
 - GPS
 - Network
 - Power

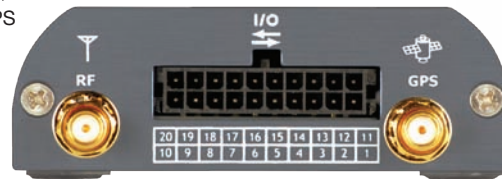
For More Information

North America and Asia
Tel: +1 510 624 4200
Fax: +1 510 624 4299

Europe
Tel: +44 20 8 622 3015
Fax: +44 20 8 622 3206

E-mail:
MobileandM2MSales@sierrawireless.com
Web site: www.sierrawireless.com

Sierra Wireless, the Sierra Wireless logo, and the red wave design are trademarks of Sierra Wireless. Heart of the Wireless Machine and AirLink are registered trademarks of Sierra Wireless. Other registered trademarks that appear on this package are the property of the respective owners.
© 2009 Sierra Wireless, Inc.
P/N PPXTGPRS 030509



SIERRA WIRELESS, CONNECTING PEOPLE AND SYSTEMS TO MOBILE BROADBAND NETWORKS AROUND THE WORLD

Sierra Wireless modems and software connect people all over the world with mobile broadband networks that keep them in touch, informed, and productive from wherever they need to be. The Company offers a diverse product portfolio addressing enterprise, consumer, original equipment manufacturer, machine-to-machine, and specialized vertical industry markets. Sierra Wireless also provides professional services to customers requiring expertise in wireless design, integration, and carrier certification.

For more information, please visit our website, www.sierrawireless.com.

SIERRA WIRELESS
AIRLINK™ PINPOINT XT
(GPRS NETWORKS)

Manage your fleet

Increase efficiency

Improve your business



AIRLINK™ PINPOINT XT MOBILE TRACKING DEVICE FOR GPRS NETWORKS

■ Intelligent Tracking

Powered by ALEOS™ technology, the PinPoint XT is a powerful, cost effective vehicle tracking and asset management platform. The GPS receiver constantly computes the vehicle location. Position reports are transmitted over the cellular data network based on time and/or distance. ALEOS offers multiple interface options for simple integration with third party applications. Flexible I/O capabilities also enable remote vehicle instrumentation, making the Pinpoint XT ideally suited for a broad range of fleet management, real-time dispatch, and AVL applications.

■ Exception Based Reporting

The PinPoint XT is embedded with a sophisticated exception based events reporting engine, powered by ALEOS. By utilizing an intuitive user interface a fleet administrator can select what data to collect, when to collect it and have the information sent via several delivery options, including e-Mail and SMS.

■ The ALEOS™ Advantage

ALEOS, the embedded core technology available only from Sierra Wireless, simplifies installation, operation and maintenance of any solution, and provides an always-on, always-aware intelligent connection for mission-critical applications. Benefits of ALEOS include:

- Persistent Network Connectivity
- Real-Time Notification
- Over-The-Air (OTA) Upgrades
- Wireless Optimized TCP/IP
- Events Reporting
- Packet Level Diagnostics
- Device Management & Control
- Remote Application Protocol

■ AceWare™ Device Management

AceWare, the Sierra Wireless suite of tools and utilities, leveraging the intelligence of ALEOS, simplifies deployment as well as remote monitoring, control and management of the entire wireless solution.

AceManager

Remote device configuration and management tool.

- Network Connectivity, Throughput and Signal Strength
- Real-Time Device Status and Health
- Comprehensive OTA Device Configuration and Firmware Updates
- Events Reporting Interface

AceNet

Enterprise-grade device management application.

- One-to-Many Device Configuration and Management
- OTA Parameter Settings and Firmware/PRL Updates
- Logs Performance Statistics
- Charts Device Behavior for Performance Analysis

AceView

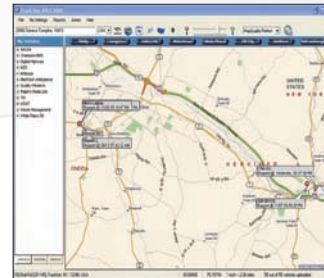
Efficient status and connection monitoring application.

- Low-Profile, Easy-To-Read, On-Screen User-Interface
- Device Status, Connectivity, Signal Strength
- GPS Signal and Mapping

■ Sierra Wireless Reliability And Support

Since 1993, Sierra Wireless has been delivering high quality data products backed by a dedicated field and call center support team. For customers, the AirLink™ brand means reliable, intelligent data devices that enable enterprise customers to enhance their operations while reducing costs and increasing revenues.

Applications	
✓	Fleet Management
✓	Automatic Vehicle Location
✓	Asset Tracking
✓	Vehicle Telemetry



POWERED BY: ™