



Citrix / Track Star AVLS Test Charts

Following are two sets of test charts taken from the Citrix Resource Monitor. The first set is with the Memory Management turned on and the second is with it turned off per the contents of various emails. The test configuration reflects the SQL server and AVLS database on a different computer from the Citrix host connected via 100 MB Ethernet , 4 instances of the Track Star AVLS client software, the National Grid database so that vehicle count matches and AVL data being generated by a simulator application with 5000 vehicles sending data at 1 second intervals. The host for the Citrix server (Presentation Server 4.0) is a Dell PowerEdge server, dual duo core Xeon processors, Windows Server 2003, 2.0 Gigabytes RAM.

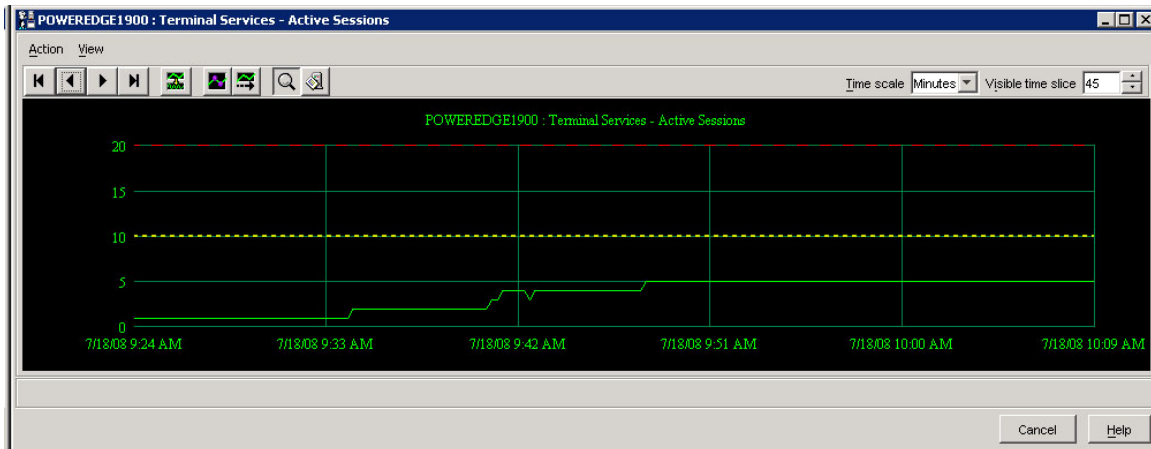


Figure 1 - Active Sessions, Memory Management On

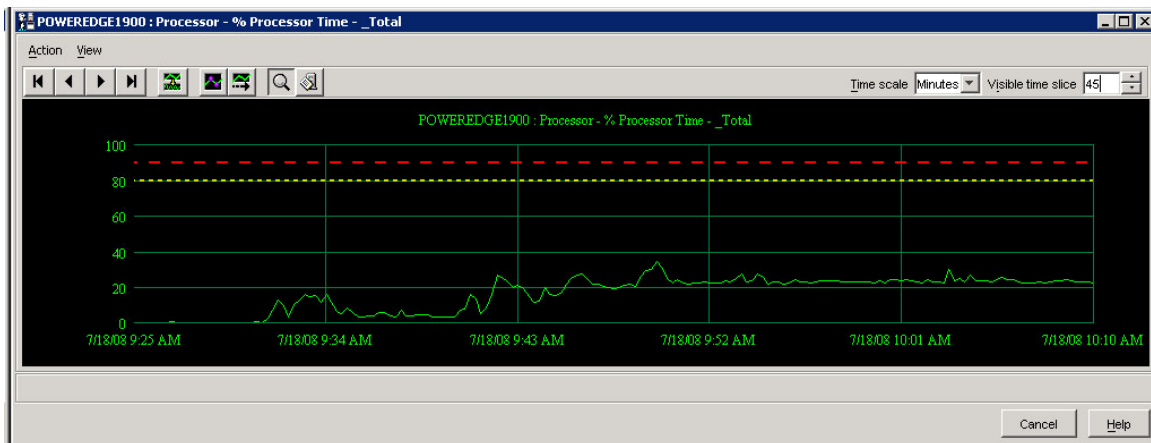


Figure 2 - Total Processor Loading, Memory Management On

Here are the test results with Memory Management turned off.

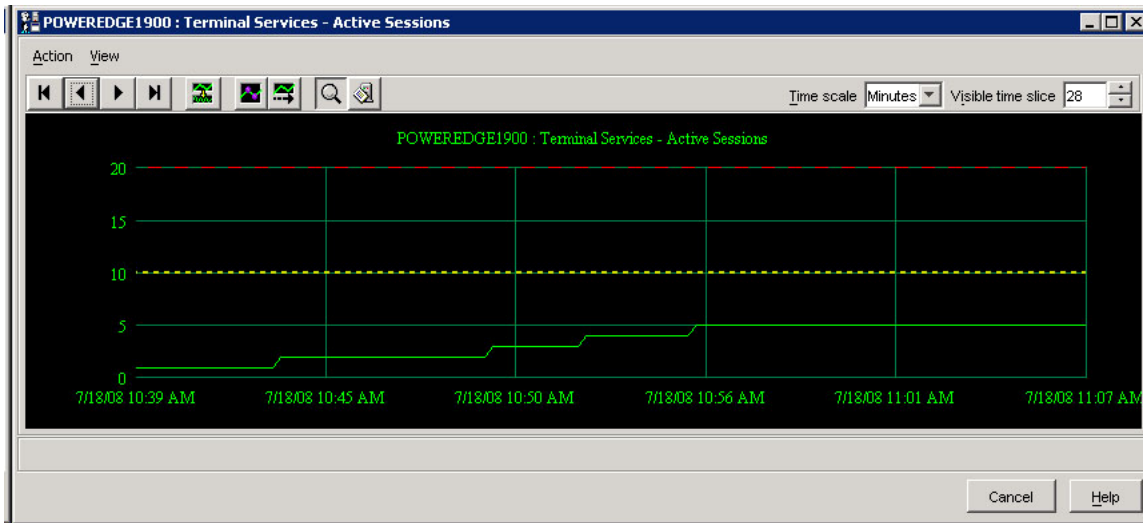


Figure 3 - Active Session, Memory Management Off

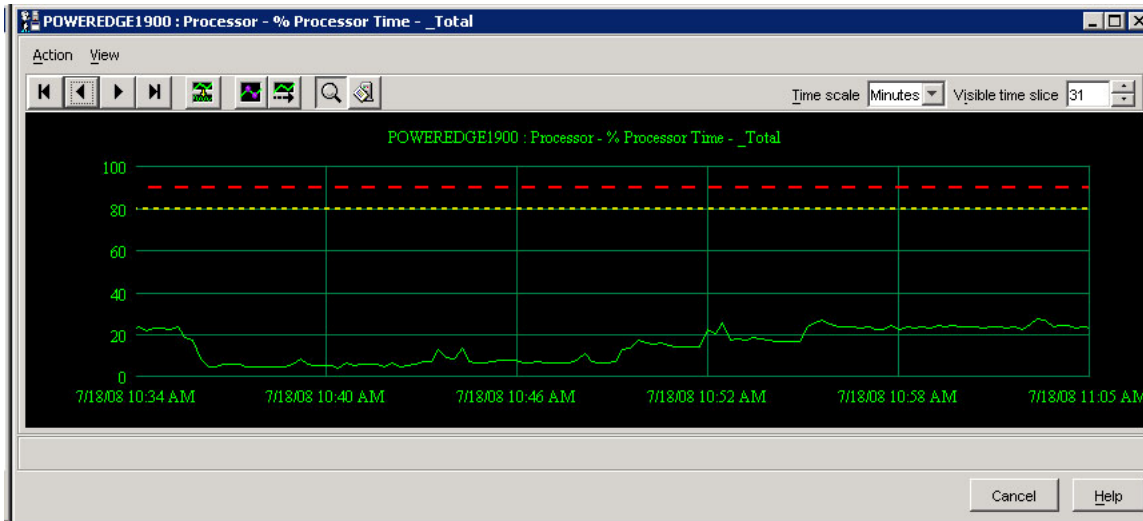


Figure 4 - Total Processor Loading, Memory Management Off

In all test instances, there was no degradation of either the operability of the instances of the AVLS client software or of the Citrix Presentation Server.